

Sub: Pre-bid meeting queries and responses for procurement of "Internet Leased Line (ILL) Connectivity at IIPE Permanent Campus (GeM Bid No.: GEM/2024/B/5486807 dt: 07.11.2024)

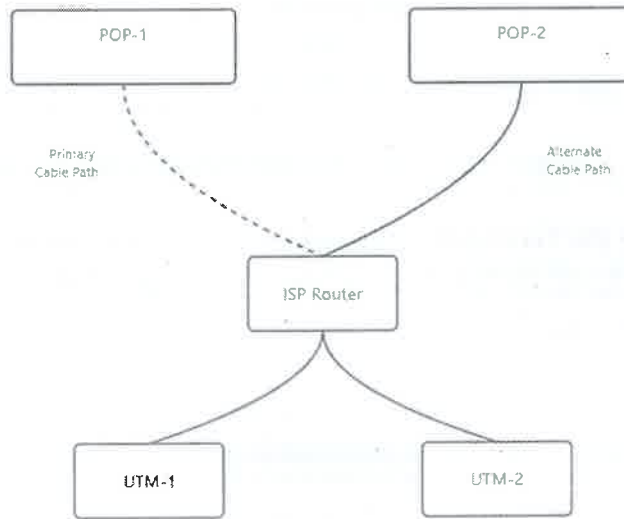
S.No.	Queries by the Bidders	Clarifications/Responses by IIPE
1	The OFC laying should be as per Govt standards. Kindly mention the same, so that it will exclude nonstandard laying process.	As IIPE is inviting bids only from Government ISPs, irrespective of mentioning specifically to follow OFC cable laying or installing Standards, IIPE expects every ISP to follow Government of India guidelines in laying OFC cable under the ground and in installing OFC cable over the head to meet the requirements and SLA as per ILL tender. Subsequently the addendum has been issued.
2	The U/G OFC Cable details to be provided i.e., Cable capacity- no of fibers, type etc.	OFC cable capacity, number of fibers and type of cables must meet the requirement and SLA as per the ILL tender. However, ISPs must consider future-proof cable technologies and type and number of cables to fulfil any adhoc requirement from IIPE to increase internet speed up to minimum 10Gbps through the same installed OFC cables. Subsequently the addendum has been issued.
3	Secondary Link may be considered to be provided through RF link, so that it will enable different last mile connectivity for better uptime	Primary and Alternate lines should be provided by ISP as per tender document.
4	Does the ISP have to provide the Lat long of the POP and cable laying details	Irrespective of whether ISPs provide the additional details such as Latitude and Longitude of POP details and cable details, ISPs must ensure to meet the technical requirements and SLA as per ILL tender.
5	SLA may be revised for standard industrial norm.	ISPs must follow the SLA as mentioned in ILL tender document.
6	As per tender Scope -Router has to be supplied by ISP, if in that case please specify the Router make and capacity details (Including Number of FE/FX ports with capacity).	Please refer the below diagram for the topology of network in IIPE Sabbavaram campus. The ISPs must provide the both the lines until IIPE server room and must provide compatible Layer-3 switch with sufficient ports to be installed at IIPE server room and must meet IIPE network topology requirement and to meet the technical requirements and SLA as per the ILL tender. However, ISPs must consider installing future-proof Layer-3 switches with additional backup ports to meet any provisional adhoc requirement or provisional additional requirement from IIPE to increase internet speed up to minimum 10Gbps through the same installed equipment without any additional installation cost to IIPE.

REGISTRAR

INDIAN INSTITUTE OF PETROLEUM & ENERGY

173

From the ISP provided switch, the UTM switches which are owned by IIPE, will be connected through either OFC cables or RJ45 cables which are IIPE owned, based on IIPE internal requirement.



Legend:
--- Underground OFC — Overhead OFC or Another UG OFC
— Internal Network

Subsequently the addendum has been issued.

7 Customer end (IIPE) equipment details to be shared so that the end equipment provided by ISP should be compatible with it.

Please refer the response for the 6th query as mentioned above.

8 Time extension of the Tender bid submission at least by another 2 weeks from 28.11.2024 i.e., till 12.12.2024

The Corrigendum has been issued.

Handwritten signature and date:
29/11/2024

REGISTRAR
INDIAN INSTITUTE OF PETROLEUM & ENERGY
VISAKHAPATNAM